

Supporting Your Student's Academic Success



Learning Services
Summer 2020

Learning Services

Student Union Building I, Suite 3129
Counseling & Psychological Services

<http://learningservices.gmu.edu>
(703) 993-2380



What we do



Learning Services is dedicated to helping all George Mason University students achieve their **academic goals**. We do this by helping students understand the academic **expectations** at Mason, by helping students understand their own **metacognition**, and by helping students establish good **self-regulation** habits.



Learning Services



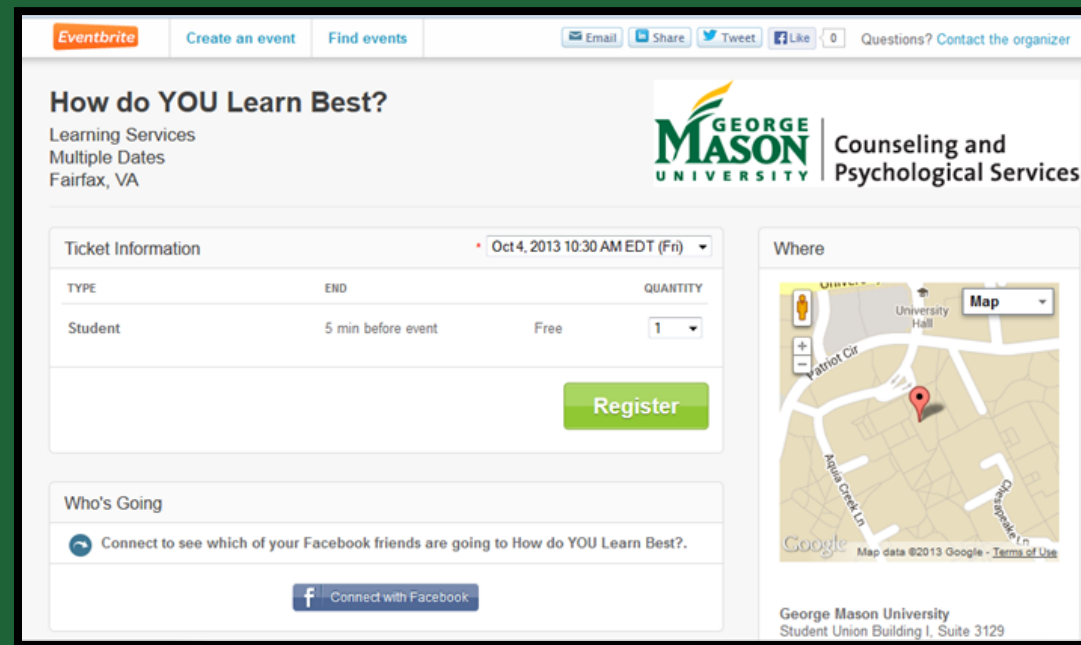
Academic Success Workshops
Academic Coaching
Academic Success Videos
Tutoring Resource List
UNIV 110/310

All services are virtual for Fall 2020

Academic Success Workshops

Register for workshops on our website:

Learningservices.gmu.edu



The screenshot shows an Eventbrite event page for "How do YOU Learn Best?". The event is organized by Learning Services at George Mason University, with multiple dates in Fairfax, VA. The event is free and takes place 5 minutes before the start of the event. The page includes a "Register" button, a "Who's Going" section with a Facebook connection option, and a map showing the location at George Mason University, Student Union Building I, Suite 3129. The map shows the intersection of Patriot Cir and Aquia Creek Ln.

Eventbrite Create an event Find events Email Share Tweet Like 0 Questions? Contact the organizer

How do YOU Learn Best?

Learning Services
Multiple Dates
Fairfax, VA

GEORGE MASON UNIVERSITY Counseling and Psychological Services

Ticket Information Oct 4, 2013 10:30 AM EDT (Fri)

TYPE	END	QUANTITY
Student	5 min before event	Free 1


[Register](#)

Who's Going

[Connect to see which of your Facebook friends are going to How do YOU Learn Best?.](#)

[Connect with Facebook](#)

Where



George Mason University
Student Union Building I, Suite 3129

Academic Coaching



- Take the Learning and Study Strategies Inventory
- Discuss academic goals and current study habits.
- Develop a study plan
- Help hold student accountable for following plan

- Once a week for 45 minutes
- Recommended to come in 3-4 sessions

How students can make an appointment

<http://tinyurl.com/masonlearning>

Call 703-993-2380



Videos

[Academic Counseling Program](#)

[Academic Skills Certificate Program](#)

[Academic Skills Workshops](#)

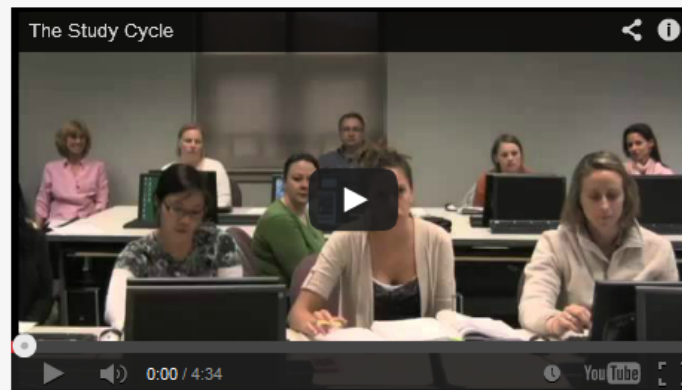
[Tutoring Resources](#)

[Academic Skills Videos](#)

Academic Skills Videos

The development of effective academic skills is essential to academic success. There are many resources available online to help you improve your academic performance. We will be adding to this list over time. For now, you may want to watch our introductory video on the topic of [Preparing for College Classes](#).

Learning Services Video Series



In Crisis?

Emergency Contacts

9-1-1 (Mason Police)

[Online Crisis Chat](#) (2PM-2AM EST)

(703) 527-4077 (CrisisLink)

1-800-273-8255 (National Suicide Prevention Lifeline)

1-877-838-2838 (Veterans' Crisis Hotline)

Non-Emergency Contacts

(703) 993-5376 (Office of Student Support and Case Management)

(703) 993-2380 (Counseling and Psychological Services)

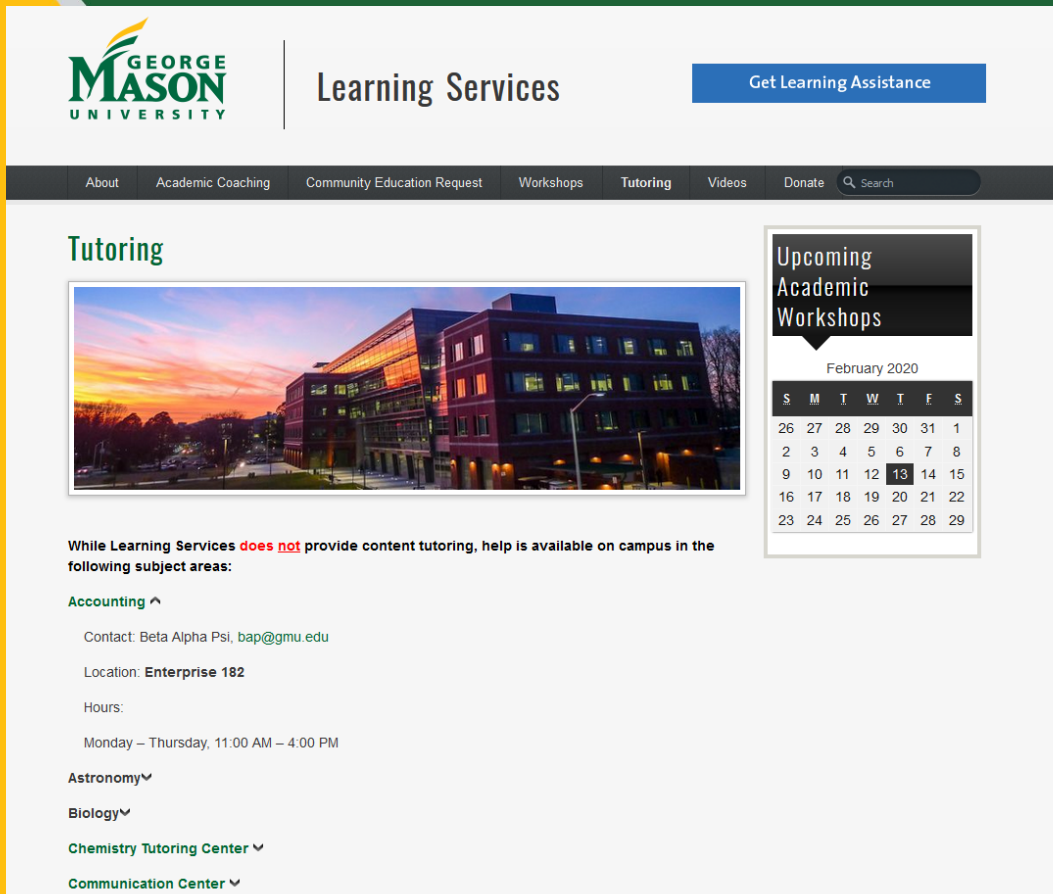
(703) 993-2810 (Mason Police)

Upcoming Events

<< Jun 2014 >>

S	M	T	W	T	F	S
1	2	3	4	5	6	7
8	9	10	11	12	13	14
15	16	17	18	19	20	21
22	23	24	25	26	27	28
29	30	1	2	3	4	5


Tutoring Resources



GEORGE MASON UNIVERSITY | Learning Services | [Get Learning Assistance](#)

About | Academic Coaching | Community Education Request | Workshops | **Tutoring** | Videos | Donate | Search

Tutoring



Upcoming Academic Workshops

February 2020

S	M	T	W	T	F	S
26	27	28	29	30	31	1
2	3	4	5	6	7	8
9	10	11	12	13	14	15
16	17	18	19	20	21	22
23	24	25	26	27	28	29

While Learning Services **does not** provide content tutoring, help is available on campus in the following subject areas:

- Accounting ^
- Contact: Beta Alpha Psi, bap@gmu.edu
- Location: **Enterprise 182**
- Hours:
- Monday – Thursday, 11:00 AM – 4:00 PM
- Astronomy v
- Biology v
- Chemistry Tutoring Center v
- Communication Center v

- We do not provide content tutoring
- There are multiple tutoring resources on campus
- If there is not tutoring available, recommend students come in for **academic coaching**



Supporting Academic Success:

**Ten Tips to Ease the
Transition to College**



1. Learning



Students are responsible for their own learning.

- Midterm grades will be posted in PatriotWeb for 100- and 200-level classes.
- Students should monitor Blackboard regularly.



2. Time Management

Encourage your student to utilize a calendar.

The screenshot shows a Google Calendar interface with a weekly view for the week of September 29 to October 5, 2013. The calendar is set to GMT-05. The left sidebar includes a 'CREATE' button, a 'Mini calendar' section, and 'My calendars' and 'Other calendars' sections. The main calendar area shows a grid of days with colored blocks representing events. The events are as follows:

Day	Event	Time
Sun 9/29		
Mon 9/30	ENGH 101	9 - 10
Mon 9/30	MATH 113	10 - 11
Mon 9/30	HIST 100	1:30p - 2:45p
Tue 10/1	COMM 100	10:30 - 11:45
Tue 10/1	BIOL 101 Lab	1p - 3p
Tue 10/1	BIOL 101 Lecture	3p - 4:15p
Wed 10/2	ENGL Paper #1 Due	
Wed 10/2	MATH 113	10 - 11
Wed 10/2	HIST 100	1:30p - 2:45p
Thu 10/3	COMM Presentation Out!	
Thu 10/3	COMM 100	10:30 - 11:45
Thu 10/3	UNIV 100	1p - 3p
Thu 10/3	BIOL 101 Lecture	3p - 4:15p
Fri 10/4	ENGH 101	9 - 10
Fri 10/4	MATH 113	10 - 11
Sat 10/5		

3. Study Location

The location where your student studies needs to be free from distractions.



4. Course Materials

Make sure your student has all of the necessary course materials



5. Multiple Information Sources

Students will need to manage multiple information sources to find out about assignments and exams.



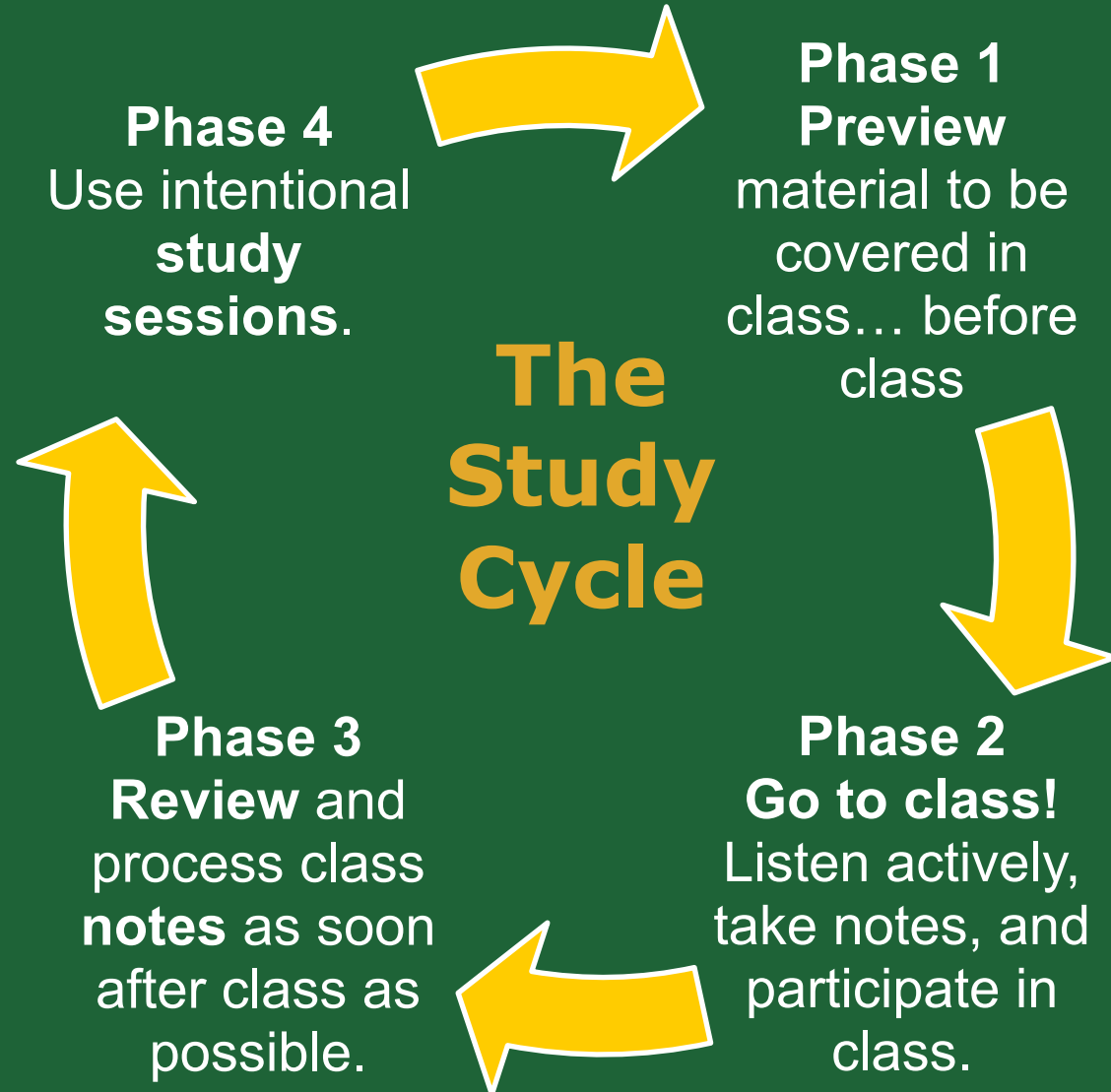
6. Longer Study Time

The coursework at Mason will take students a good deal longer than the homework in high school.



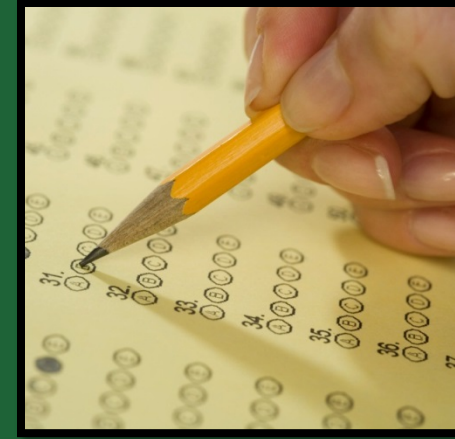
Number of Credits	Number of Study Hours
3	6/week
15	30/week

7. Study Cycle



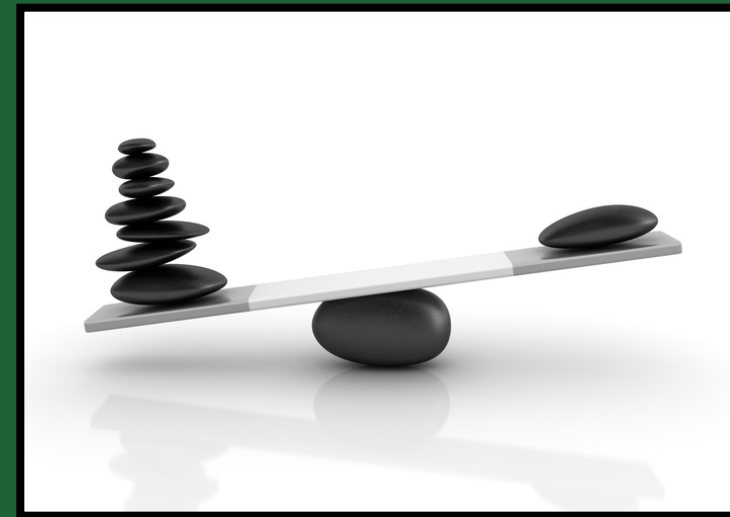
8. Self-Testing

- Summarize a lecture
- Summarize a chapter
- Create practice questions
- Flash cards
- End of chapter questions

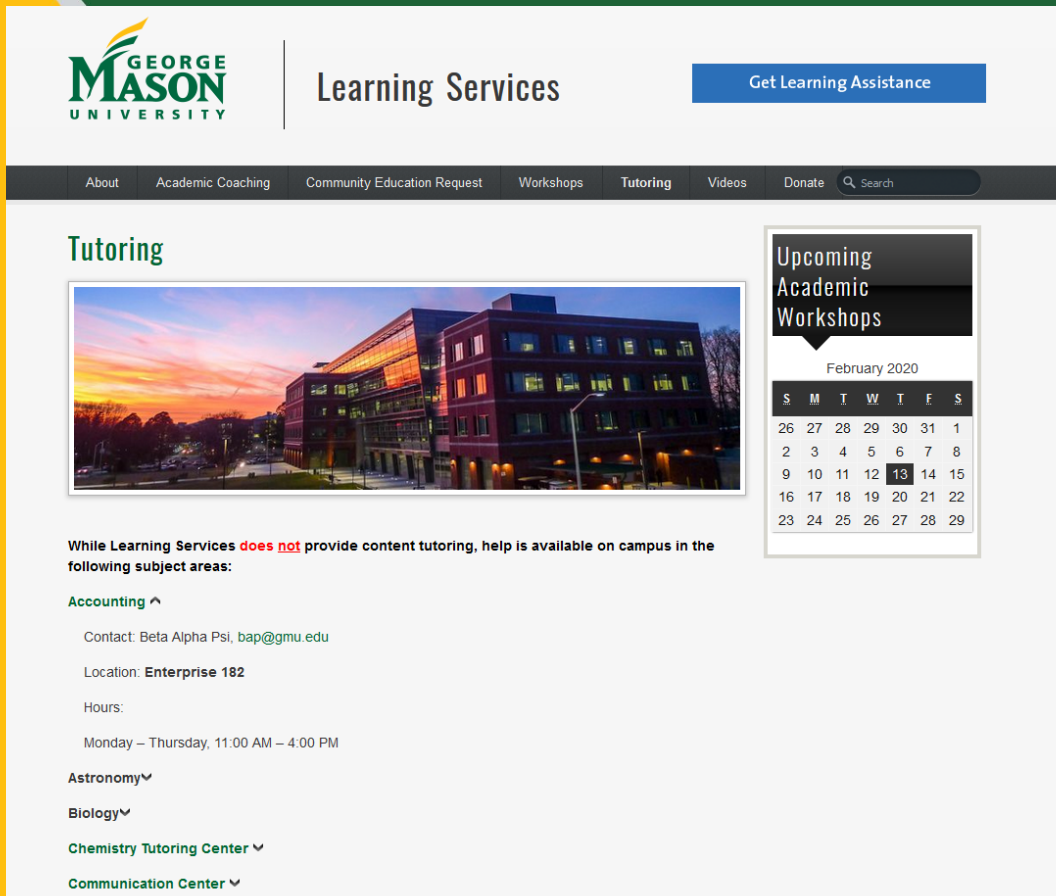


9. Challenge and Support

	Low Challenge	High Challenge
Low Support	Disengage	Retreat
High Support	Stagnate	Maximum Growth



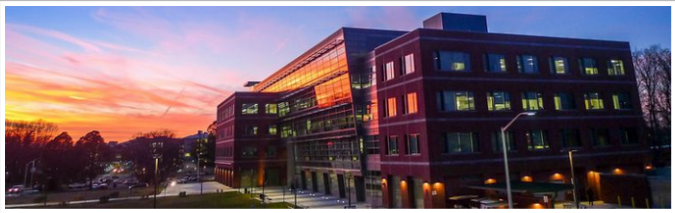
10. Campus Resources



GEORGE MASON UNIVERSITY | Learning Services | [Get Learning Assistance](#)

About | Academic Coaching | Community Education Request | Workshops | Tutoring | Videos | Donate | Search

Tutoring



Upcoming Academic Workshops

February 2020

S	M	T	W	T	F	S
26	27	28	29	30	31	1
2	3	4	5	6	7	8
9	10	11	12	13	14	15
16	17	18	19	20	21	22
23	24	25	26	27	28	29

While Learning Services **does not** provide content tutoring, help is available on campus in the following subject areas:

- Accounting ^
- Contact: Beta Alpha Psi, bap@gmu.edu
- Location: **Enterprise 182**
- Hours:
- Monday – Thursday, 11:00 AM – 4:00 PM
- Astronomy v
- Biology v
- Chemistry Tutoring Center v
- Communication Center v

- Writing Center
- Math Center
- Communication Center
- Libraries



Questions?

