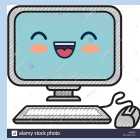




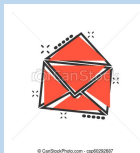
STUDENT HEALTH INSURANCE



shs.gmu.edu/insurance



WEBSITE <http://shs.gmu.edu/insurance/>



STUDENT INSURANCE EMAIL insure@gmu.edu



703-993-2826



shs.gmu.edu/insurance

The student Health Insurance Plan has been established mainly for George Mason students. The plan provides coverage for sicknesses and injuries locally and when you travel either domestically or abroad.

The student health insurance plan is structured to meet federal mandates set forth by the Affordable Care Act.



- Student Health Insurance Open Enrollment will continue until February 15, 2021.
- Spring/Summer Coverage January 1, 2021 to August 15, 2021.
- The premium for the spring/summer semester is \$1,755

shs.gmu.edu/insurance

Aetna Health Insurance Information

- PPO plan
- Vision Discount
- Prescriptions

shs.gmu.edu/insurance





Domestic Students are not required to purchase or enroll into the student health insurance plan.

shs.gmu.edu/insurance

You are eligible to enroll into the health insurance plan if you are a current student and fall into one of these categories:

- Undergraduate or graduate level student taking 3 or more credit hours per semester
- PhD or Doctoral students enrolled in a doctoral program.
- Students taking less than the required credit hours, but are completing their final course Work to obtain their degree for the current academic year.

Open Enrollment for the Spring will continue until February 15th Fall 2021 open enrollment will begin in mid-July.

You will find all the information needed to enroll on our website:

<http://shs.gmu.edu/insurance>

IF you have any questions regarding the student health insurance

Email the office at insure@gmu.edu

We are more than happy to answer any of your questions.

